



Wildfire Ready Solutions

Product Guide



Table of Contents

Plan Name	Square Feet	Page
Hideaway I	385	5
Hideaway II	630	6
Hudson	534	7
West Coast I	970	8
West Coast II	1660	9
Nicola I	720	10
Nicola II	935	11
Okanagan	1050	12
Okanagan II	1050	13
Barndo	1700	14
Thompson	2000	15
Columbia	640	16
Tundra - Duplex	2120	17
Tundra - 6 Plex	4665	18
Community Centre	4850	19



Our Company

Who We Are

Ember Smart Homes is a Canadian company specializing in designing and supplying prefabricated home packages specifically tailored for the unique challenges of Northern Canada. With a focus on wildfire resistance, energy efficiency, and sustainable construction, Ember Smart Homes is committed to providing safe, comfortable, and eco-friendly living solutions for residents of the North.

Our Mission

To empower communities and individuals with peace of mind by providing innovative and accessible fire-resistant housing solutions, safeguarding lives and preserving cherished memories.



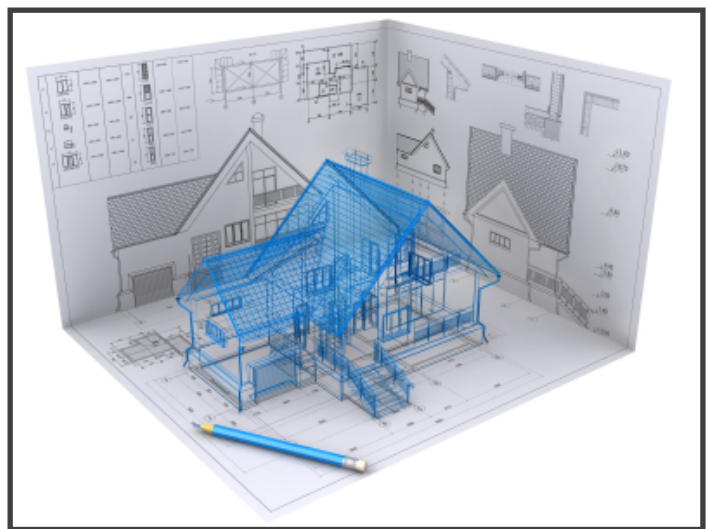


Custom Projects

At **Ember Smart Homes**, we offer comprehensive design and construction services tailored to meet the unique needs of every project. Our experienced team collaborates closely with clients to understand their requirements, budget, and desired level of energy efficiency and comfort. We then leverage our expertise to develop cost-effective solutions that result in exceptional, custom-designed homes that exceed expectations.

Services Provided:

- Home Packages
- Pre-Fab Wall, Roof and Floor
- Custom Home Kits
- Cottages
- Residential
- Commercial
- Remote Site Services





Building Materials

Our home packages take a forward-thinking approach to building materials, prioritizing both performance and aesthetics. Structural insulated panels (SIPs) form the floor, walls and roof systems. Offering superior insulation and streamlining the construction process by pre-fabricating the panels in a controlled environment. This translates to a faster build time and a more energy-efficient home. Metal roofing is chosen for its exceptional durability, able to withstand harsh weather conditions and fire resistance. Completing the exterior is Hardie siding, known for its fire resistance and minimal upkeep requirements. Additionally, Hardie siding boasts a beautiful, textured finish that elevates the home's curb appeal. This combination of materials ensures a strong, energy-saving, and visually striking home built to last for generations.

Building Structure

- Floor - R-50
- Walls - R-35
- Roof - R-50
- Structural Insulated Panels

Metal Roofing

- Tough Rib
- Standing Seam
- Various Colours Available

Exterior Finish

- Hardie Siding - Cement Siding
- Smart Trims
- Vinyl Windows





Home Packages

Structure Pro

- Engineered Construction Drawings
- SIP Wall and Roof Components
- Structural Beams and Columns
- Engineered Floor systems
- Interior Framing and Stair Components
- Energy Efficient Windows and Doors



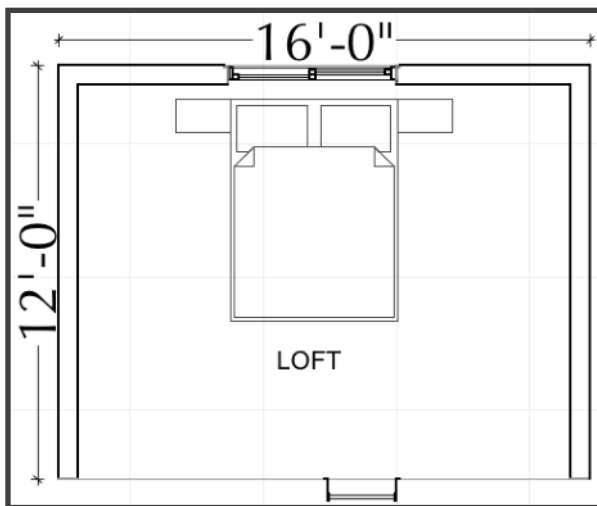
Weather Pro

- Engineered Construction Drawings
- SIP Wall and Roof Components
- Structural Beams and Columns
- Engineered Floor systems
- Interior Framing and Stair Components
- Energy Efficient Windows and Doors
- Complete Roof Package
- Complete Exterior Finish Package





Hideaway I



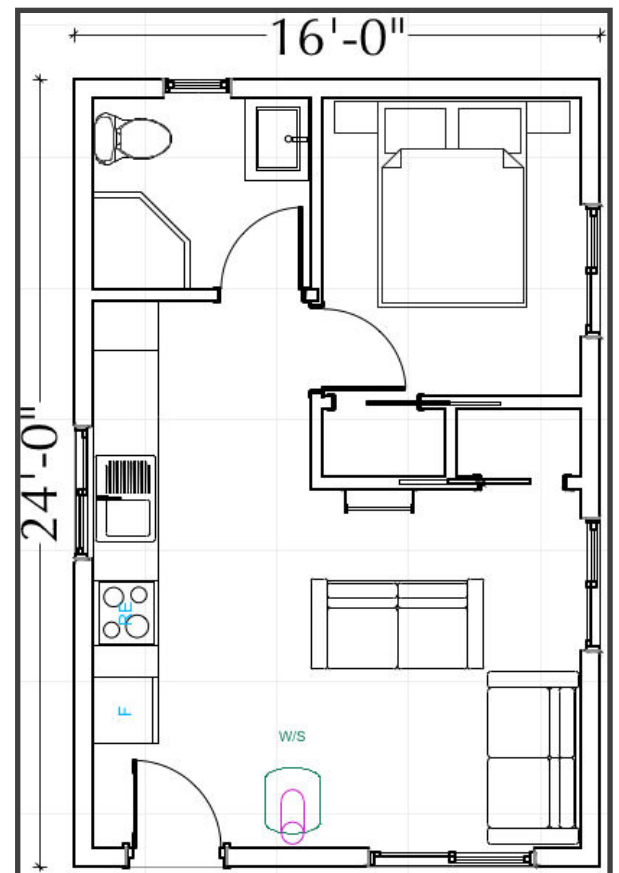
16'-0" x 24'-0"

Living area: 385 sqft

Loft area: 200 sqft

Bedrooms: 2

Bathrooms: 1





Hideaway II



22'-0" x 30'-0"

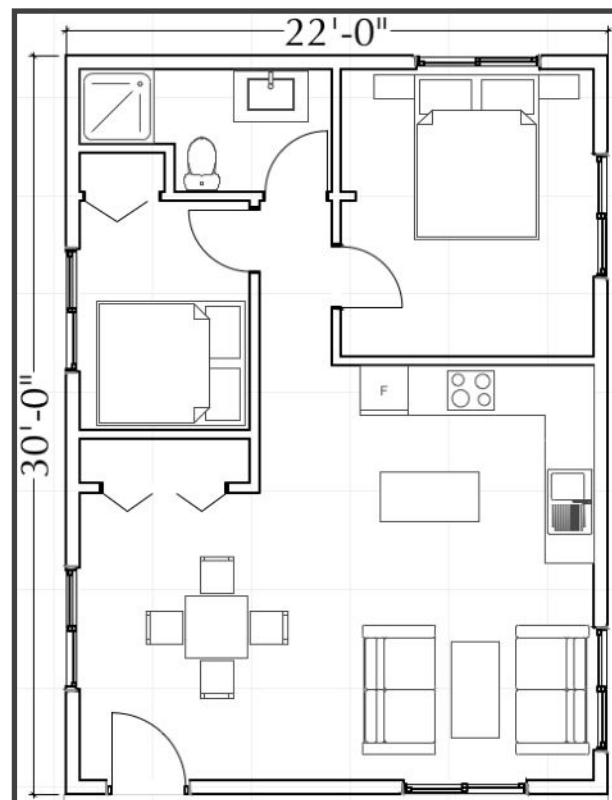
Living area: 630 sqft

Deck area: 300 sqft

Bedrooms: 2

Bathrooms: 1

Loft can be added
for additional living
area.





Hudson



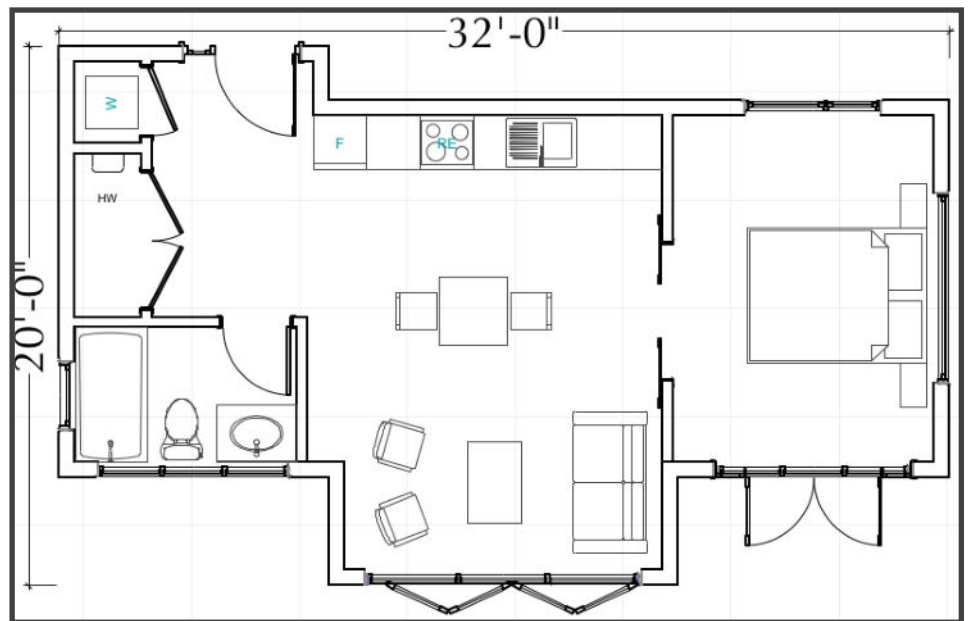
32'-0" x 20'-0"

Living area: 534 sqft

Deck area: 178 sqft

Bedrooms: 1

Bathrooms: 1





West Coast I



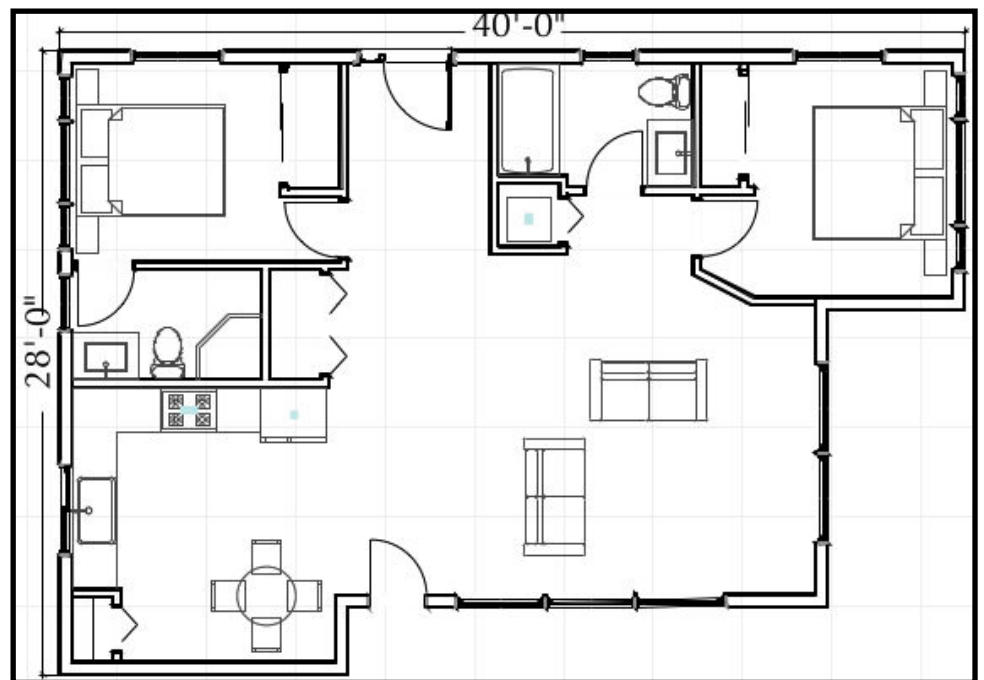
40'-0" x 28'-0"

Living area: 970 sqft

Deck area: 253 sqft

Bedrooms: 2

Bathrooms: 2





West Coast II



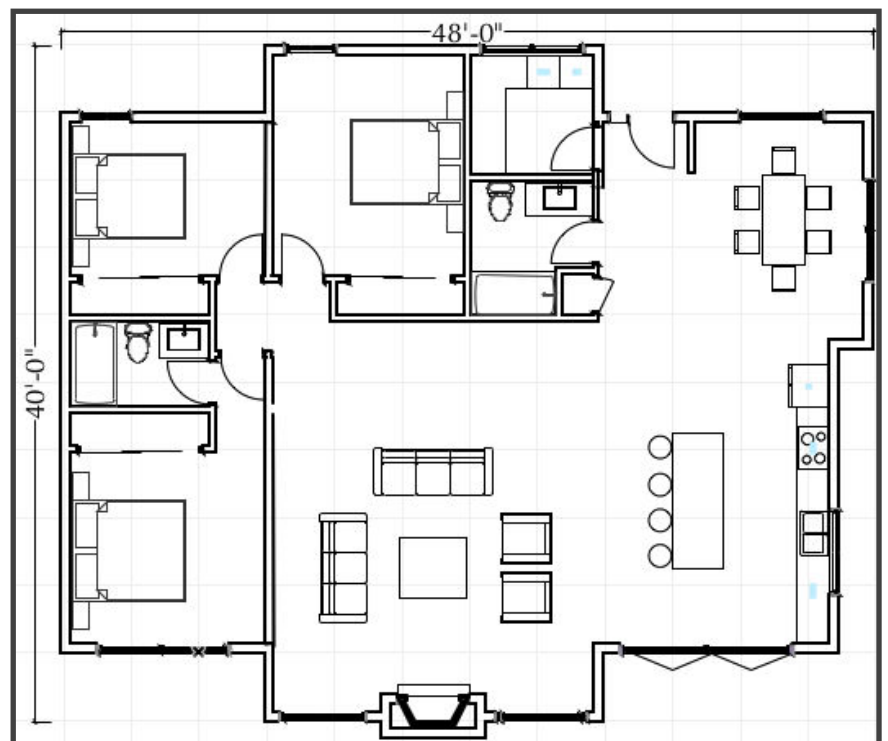
48'-0" x 40'-0"

Living area: 1660 sqft

Deck area: 400 sqft

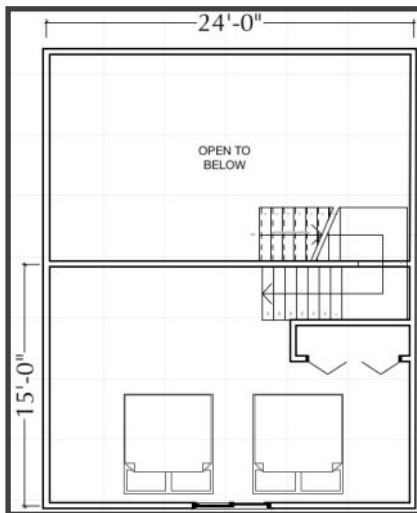
Bedrooms: 3

Bathrooms: 2

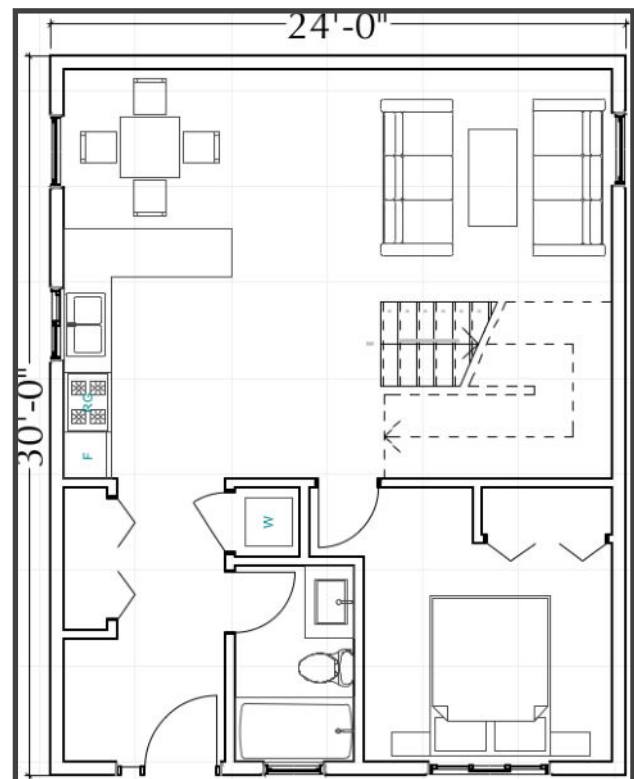




Nicola



24'-0" x 30'-0"
Living area: 720 sqft
Deck area: 200 sqft
Bedrooms: 1 + Loft
Bathroom: 1





Nicola II



36'-0" x 26'-0"

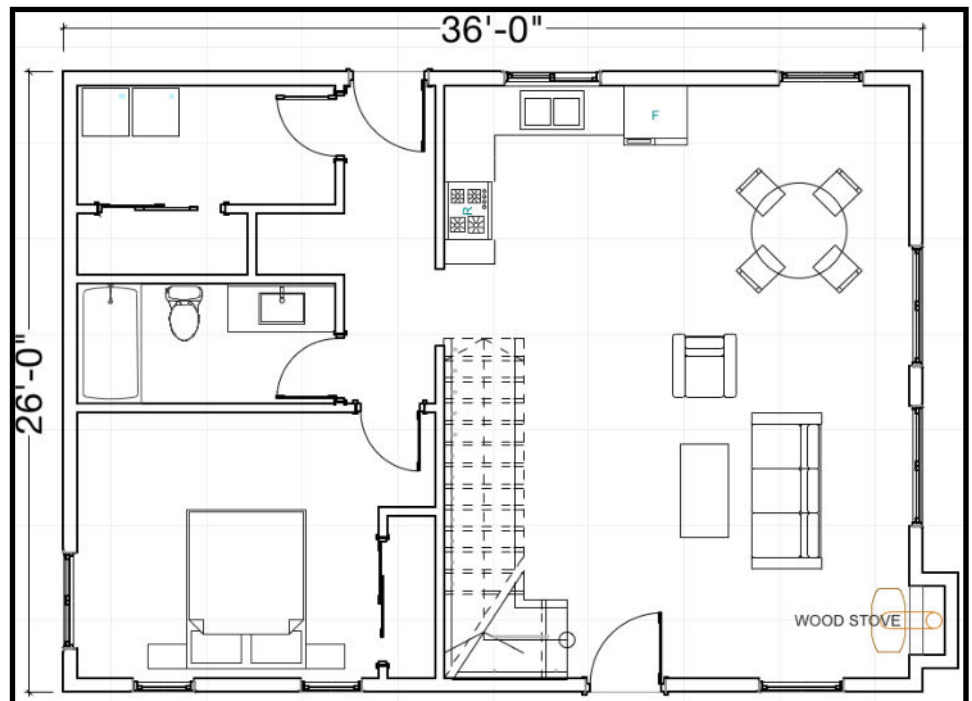
Living area: 935 sqft

Deck area: 300 sqft

Bedrooms: 1 + loft

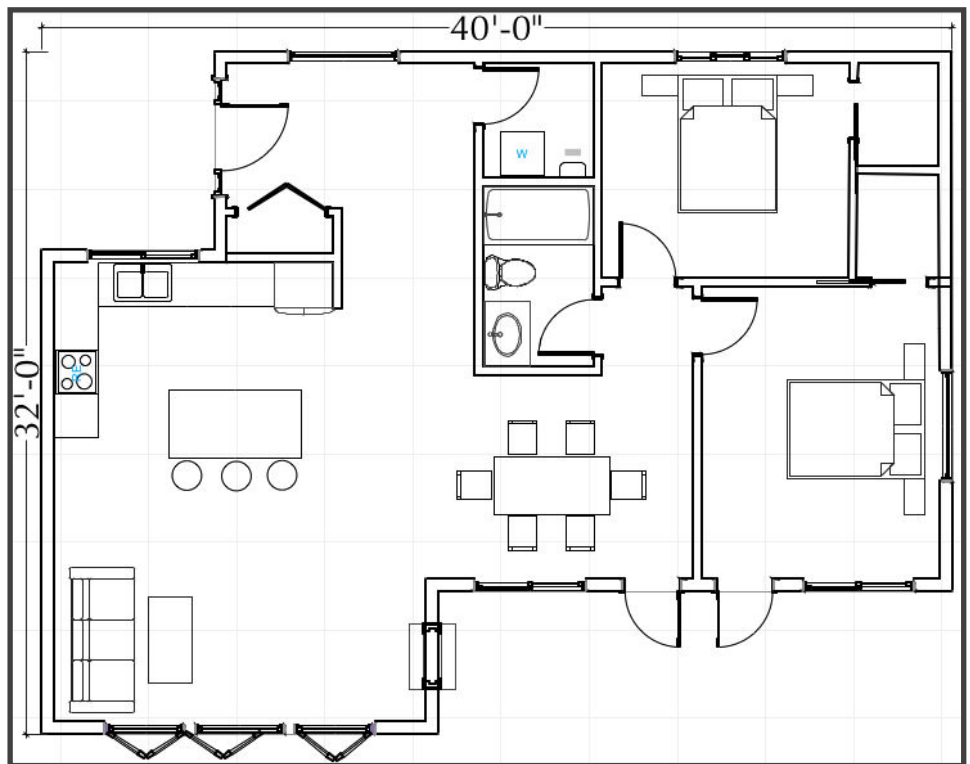
Bathrooms: 1

Optional loft can be added for additional 370 sqft.





Okanagan



40'-0" x 32'-0"

Living area: 1050 sqft

Deck area: 500 sqft

Bedrooms: 2

Bathrooms: 1



Okanagan II



40'-0" x 42'-0"

Living area: 1050 sqft

Garage area: 500 sqft

Bedrooms: 2

Bathrooms: 1

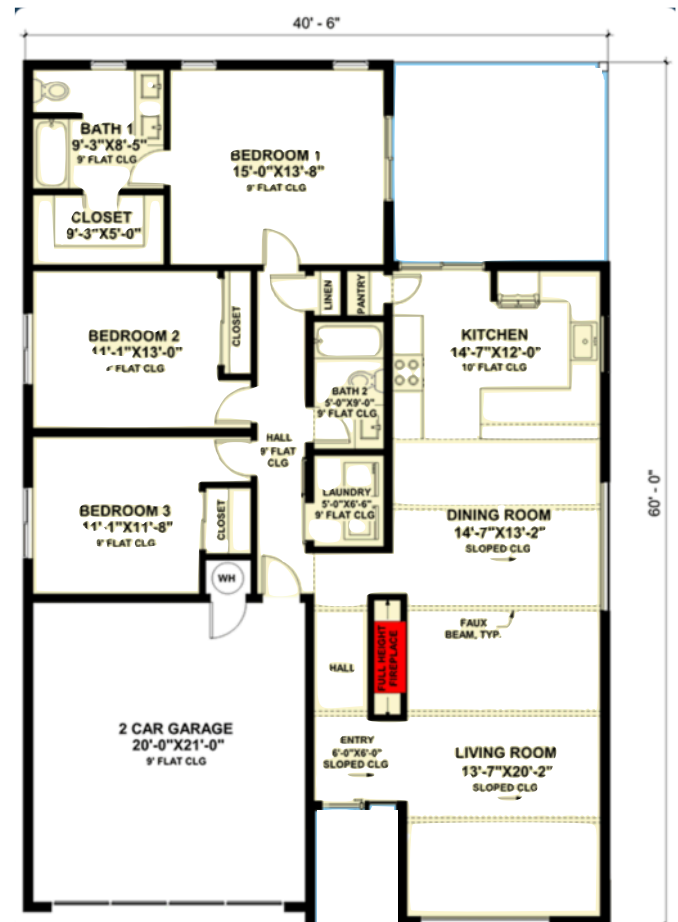




Living area: 1700 sqft
Garage area: 2100 sqft
Bedrooms: 3
Bathrooms: 2



Thompson



40'-0" x 60'-0"

Living area: 2000 sqft

Garage area: 420 sqft

Bedrooms: 3

Bathrooms: 2



Columbia

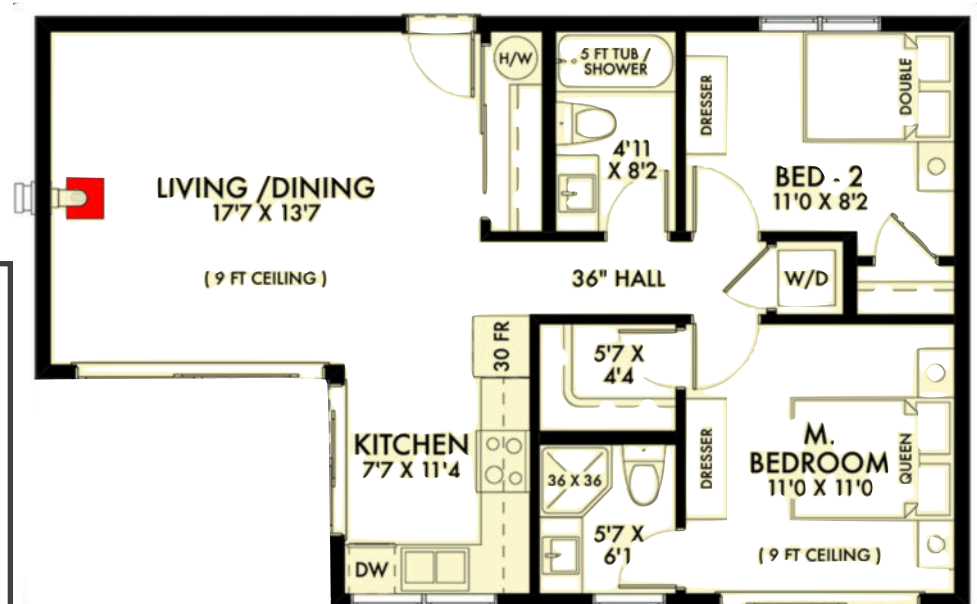


34'-0" x 22'-0"

Living area: 640 sqft

Bedrooms: 2

Bathrooms: 1





Tundra - Duplex



64'-0" x 48'-0"

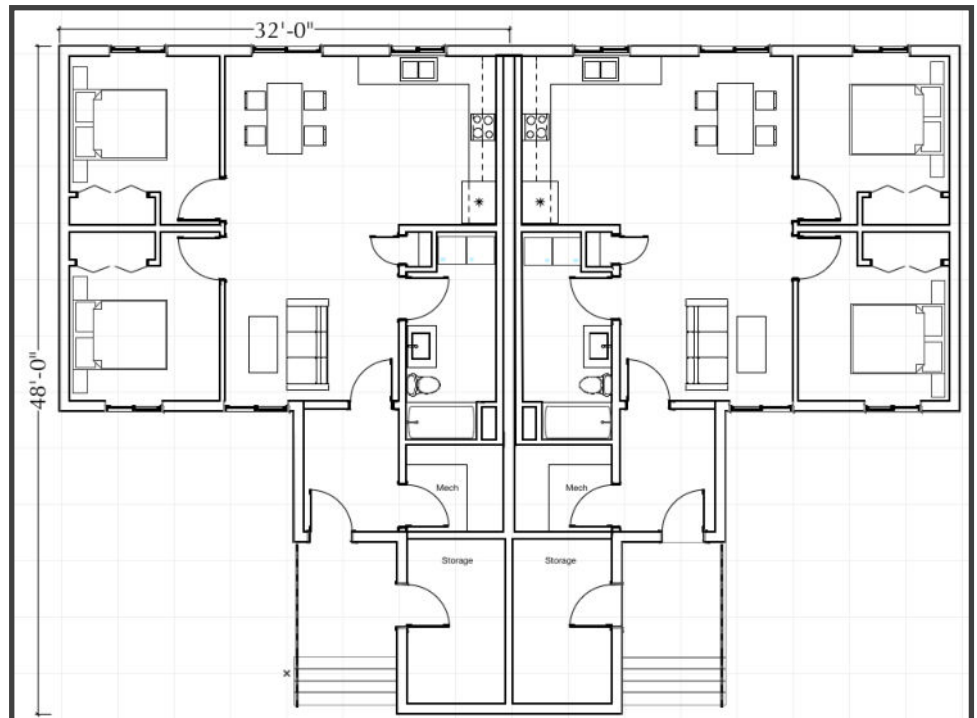
Living area: 2120 sqft

Deck area: 83 sqft

Bedrooms: 2

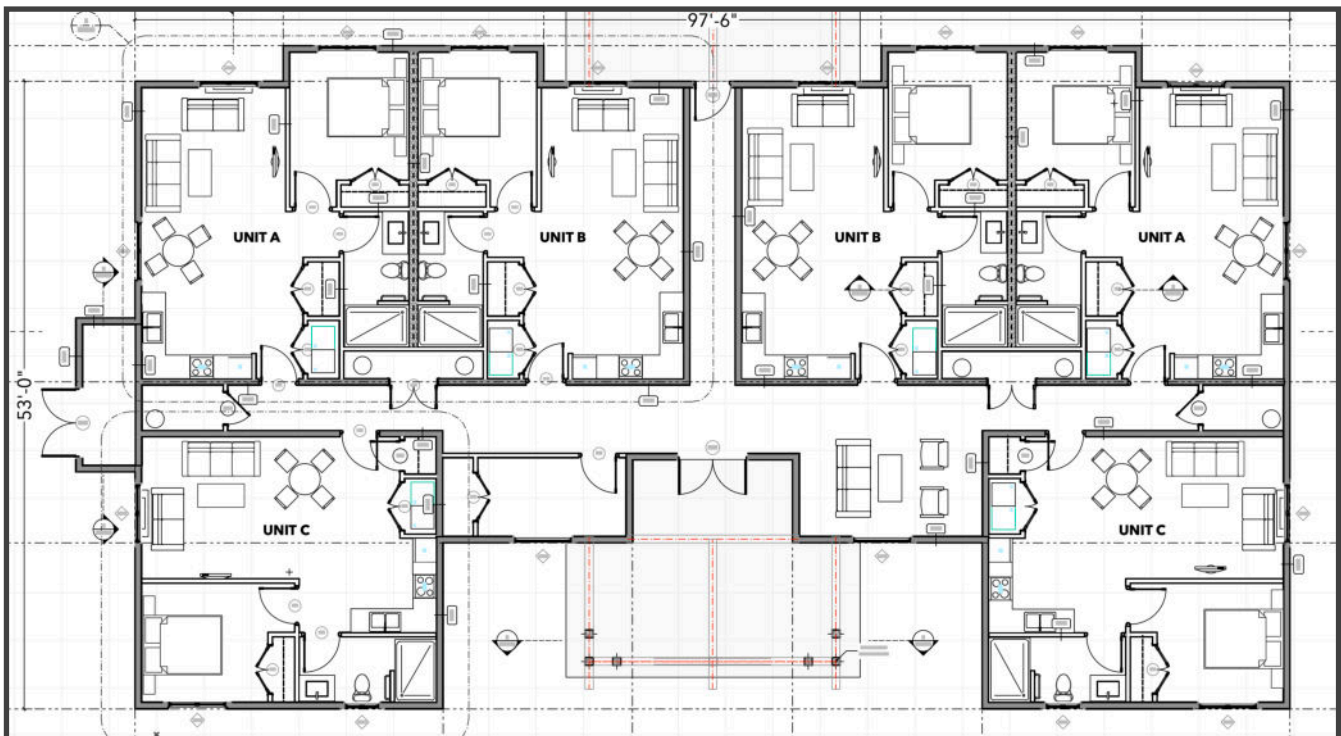
Bathrooms: 1

Designed for
Northern Climates.
Able to build on
permafrost.





Tundra - 6 Plex

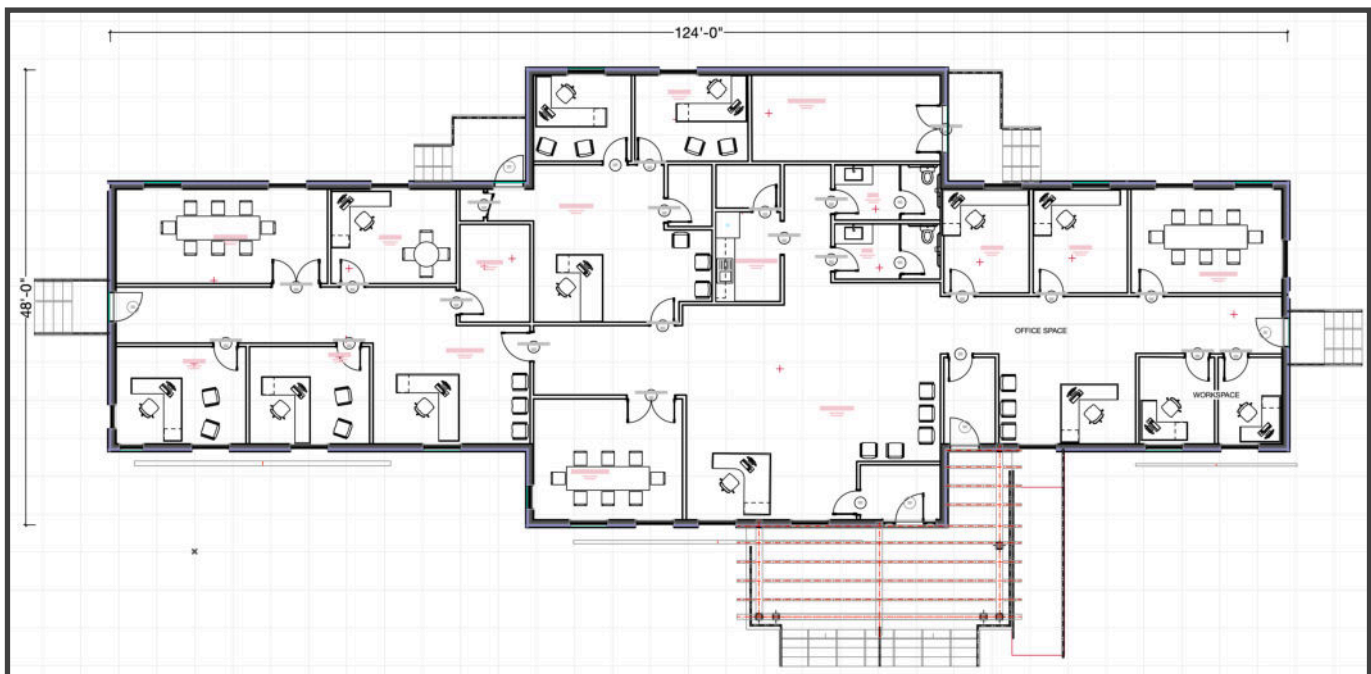


98'-0" x 53'-0"

Total area: 4,665 sqft Bedrooms: 1
Unit area: 583 sqft Bathrooms: 1



Community Centre



124'-0" x 48'-0"

Floor area: 4850 sqft

Space can be used for administrative use,
community centre or other activities.



EMBER
SMART HOMES

Wildfire Ready Solutions

Ember Smart Homes Ltd.

6300 Chukar Drive
Kamloops, BC
P. 250-371-0657
E. dbaxter0657@gmail.com



Proudly Canadian